



# MOVE INN ESTATES

MAKING THE RIGHT MOVE



**Nuffield Road**

Coventry, CV6 7HU

Offers In Excess Of £170,000



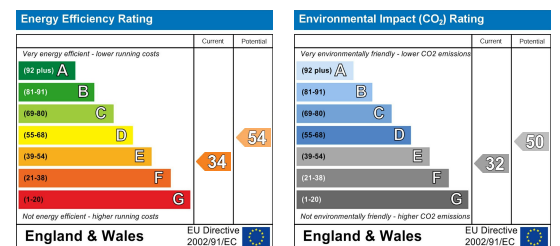
## Floor Plan



## Area Map



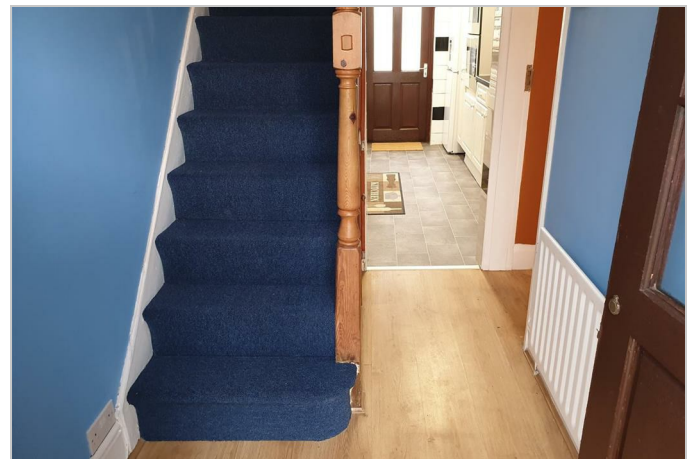
## Energy Efficiency Graph



## Viewing

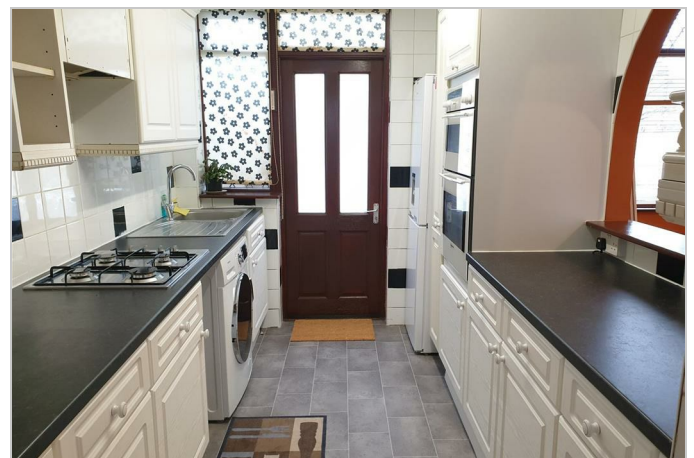
Please contact our Move Inn Estates - Sales Office on 0208 574 4966 if you wish to arrange a viewing appointment for this property or require further information.

- Three spacious bedrooms
- Family Bathroom
- Through-lounge
- Private Rear Garden
- Gas Central Heating
- Rear Garage
- Potential To Extend (STTP)
- No Onward Chain



Move Inn Estates bring to the market with NO onward chain, this beautiful three bedroom semi-detached house comprises of a through lounge, separate kitchen with gloss white finishing leading into a beautiful paved garden as well as a garage. The first floor benefits from two double bedrooms with fitted wardrobes and a single room.

Located in a popular yet quiet residential street and is the perfect opportunity for a family home. This property is located within close vicinity of multiple bus routes & providing easy access to the local shopping centre.



These particulars, whilst believed to be accurate are set out as a general outline only for guidance and do not constitute any part of an offer or contract. Intending purchasers should not rely on them as statements of representation of fact, but must satisfy themselves by inspection or otherwise as to their accuracy. No person in this firm's employment has the authority to make or give any representation or warranty in respect of the property.